



Linear actuators MODEL K300-200-20

The Linear Actuator K300 is connected to a Liteguide controller and is mainly used for EPC systems.

Linear actuators are solidly built, with an integrated speedreduction (spur gear) and ball screw.

Features

- 3.0 kN High-Thrust Actuator
- Space saving because no servo driver is required
- Reliable, proven stability control is possible
- DC Motor Specifications
- CE (EU Directive) Certified Product

Specifications

Model	Dwg. No.	Stroke (mm)	Speed (mm/s)	Thrust (kN)	Mass (kg)	Rated voltage
K300-200-20	KL0001660-EA	185	20 (*)	3.0	13kg	48V (2.5A)

* Speeds shown are when unloaded.

CE EU Directive

This product is compliant with the EU Electromagnetic Compatibility (EMC) Directive.

EU Directive: 2006/42/EC

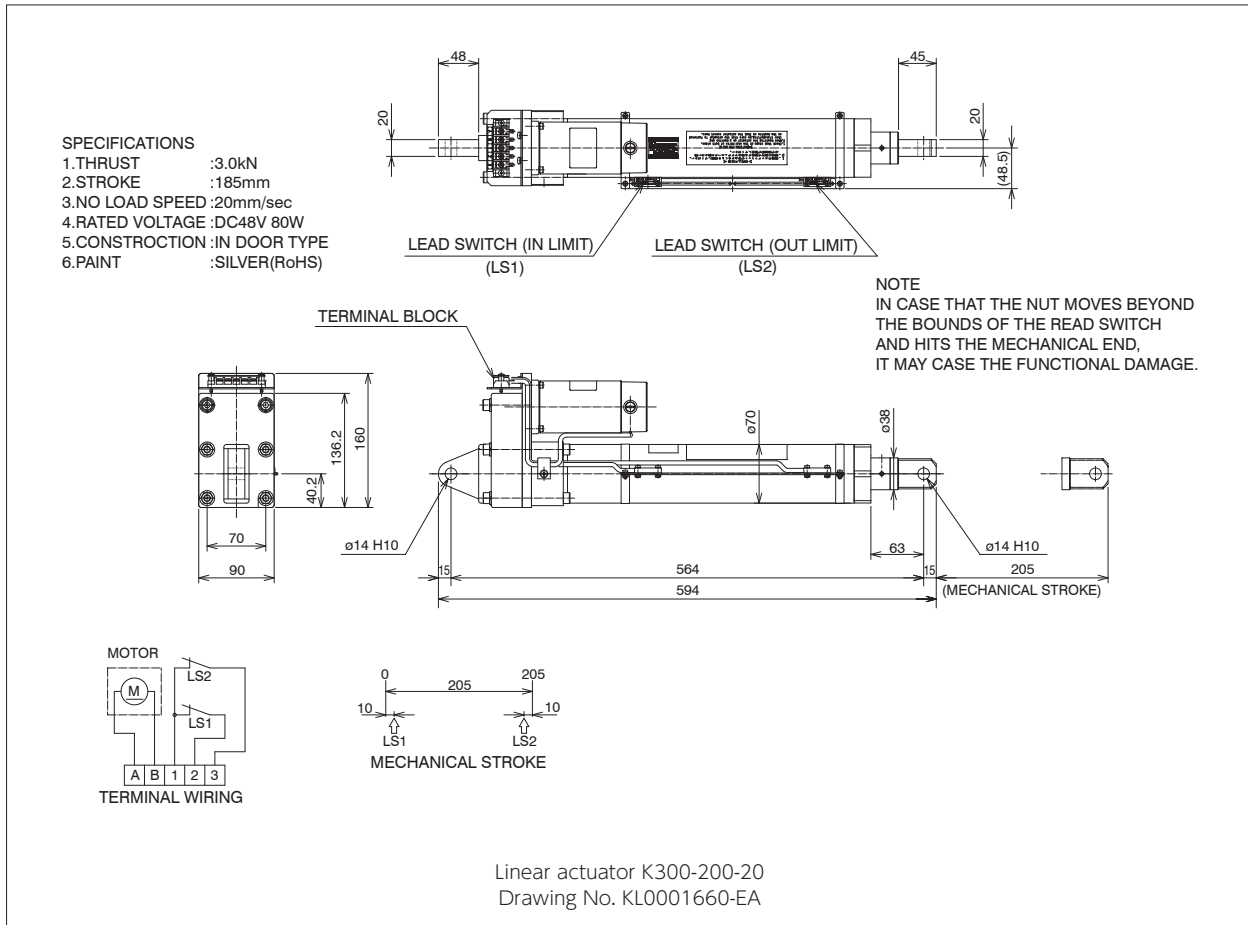
Harmonized Standards: ISO12100:2010

High-Torque Electric Actuator
Release of DC Motor Specifications

Webguide Control

Linear actuators K300-200-20

External Dimensions



NIRECO and the NIRECO logo are trademarks or registered trademarks of Nireco Corporation in Japan. The details contained in this catalog are subject to change without notice. Please contact us at the following address when considering a purchase.



Hachioji Office

2951-4 Ishikawa-machi, Hachioji, Tokyo, 192-8522, Japan
 Telephone: +81-42-660-7358 Facsimile: +81-42-645-7737

Website: <http://www.nireco.com> E-mail: world@nireco.co.jp